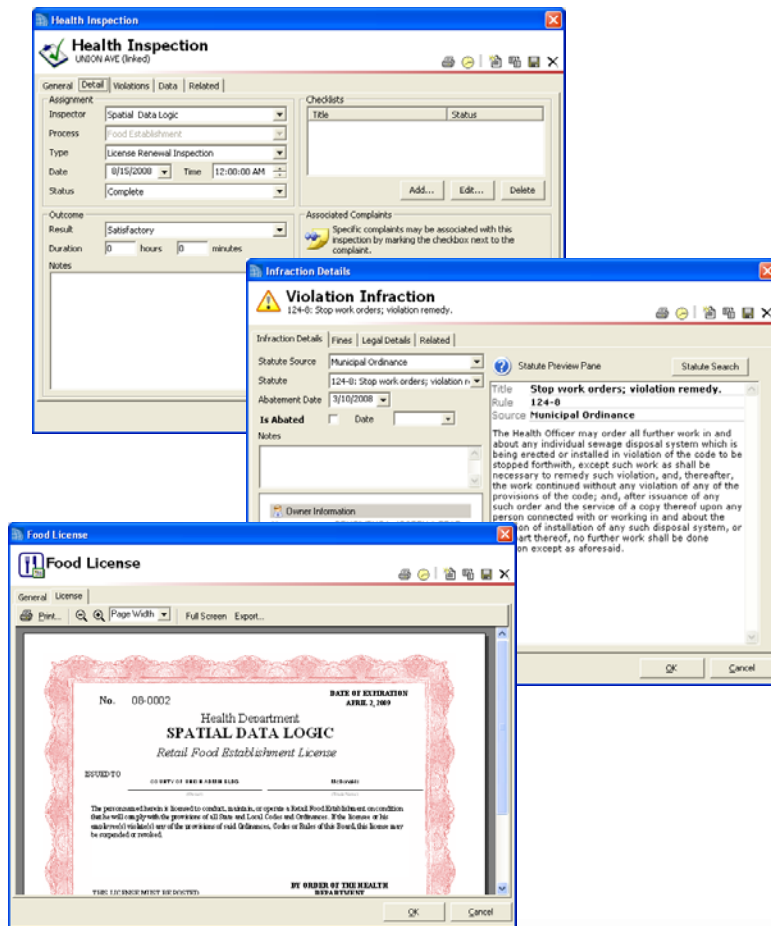


Health Professional Module

Software for the Health Department



- Easy-to-use: menu driven/point & click/ follows process currently used
- Ability to process and manage data for multiple municipalities
- Complaints of public health violations can be received from other municipal employees or citizens
- All data processed will be stored at your municipality
- Health Inspections, Certificates, Licenses, Violations and Complaints can be processed, tracked and printed
- Statutes look up and search for citation
- Municipal tax (ModIV) data is easily updated by your Assessor
- Integrated into your GIS
 - Applications/Certificates/Licenses/Inspections/Violations can now be linked to a parcel
 - All Health data is now linked to tax information enabling reporting and spatial analysis
 - Integrated mapping tools are easy to use
- (Planned) Accepts inquiries to the Health Department via the SDL Municipal Portal

One module within a complete Municipal Management Suite

Health Departments are charged with the well being of residents as it relates to:

- The cleanliness and certification of retail food establishments
- The abatement of all public health complaints
- Enforcement of state codes e.g. recreational bathing, nursery and day care facilities
- Preserve and protect our surface and groundwater supplies

These responsibilities require periodic inspections of said facilities. Scheduling the inspections, recording results, issuing licenses and violations are functions that can be performed more efficiently with automation. Daily, weekly and monthly reminders and reports will enable maximum efficiency and success, which results in safer communities.

SDL believes that Health Departments are actually service organizations that operate within a network of departments that have a greater purpose. That purpose is to serve and protect the citizens of their community. To effectively operate within a network, you must be able to communicate with the other members, interact with them, see what they are doing and share data with them. Now you can with the Professional Series of Workflow Automation tools from Spatial Data Logic.

GeoLogic Municipal Roadmap

For a complete GeoLogic Municipal Roadmap:
www.SpatialDataLogic.com/sdl/Roadmap

Visit us on the web at:
www.SpatialDataLogic.com



SpatialDataLogic

2 Executive Drive Suite 200
Somerset, NJ 08873
Phone: 800-805-9695



ESR
Technologies
Authorized
Reseller
Trademarks provided
under license from ESRI.