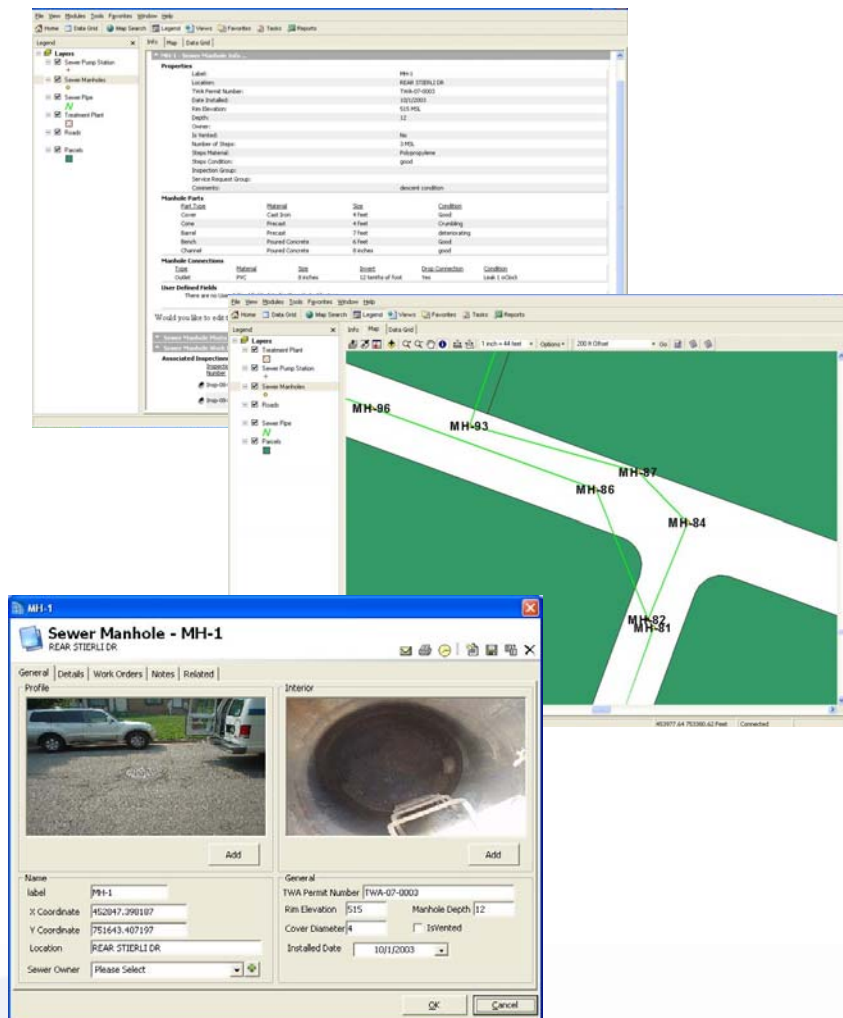


Sewer Utility Module

Software for Sewer Utility Management

- Asset import of Force Mains Pipes, Manholes, Pump Stations, Treatment Facilities, etc. (via GIS Assets)
- Asset Management such as Manhole Components, Asset Repairs, ID Numbers, Pictures, etc.
- Work Orders Management
- Crew / Labor Management
- Inspections Management
- Integrated Complaint Management
- Easy to use GIS that automatically links data across departments



One module within a complete Municipal Management Suite

The Sewer Utility Management Department is responsible for a wide range of asset management and asset maintenance throughout the municipality. The Department's Staff provides for the delivery of high quality, cost effective, efficient, safe services involving public infrastructures and facilities to enhance the quality of life in the municipality.

SDL believes that Sewer Utility Departments are actually service organizations that operate within a network of departments that have a greater purpose. That purpose is to serve and protect the citizens of their community. To effectively operate within a network, you must be able to communicate with the other members, interact with them, see what they are doing and share data with them. Now you can, with the Professional Series of Workflow Automation tools from Spatial Data Logic.

GeoLogic Municipal Roadmap

For a complete GeoLogic Municipal Roadmap:
www.SpatialDataLogic.com/sdl/Roadmap

Visit us on the web at:
www.SpatialDataLogic.com



ESR
Technologies
Authorized
Reseller
Trademarks provided
under license from ESRI.



SpatialDataLogic

2 Executive Drive Suite 200
Somerset, NJ 08873
Phone: 800-805-9695