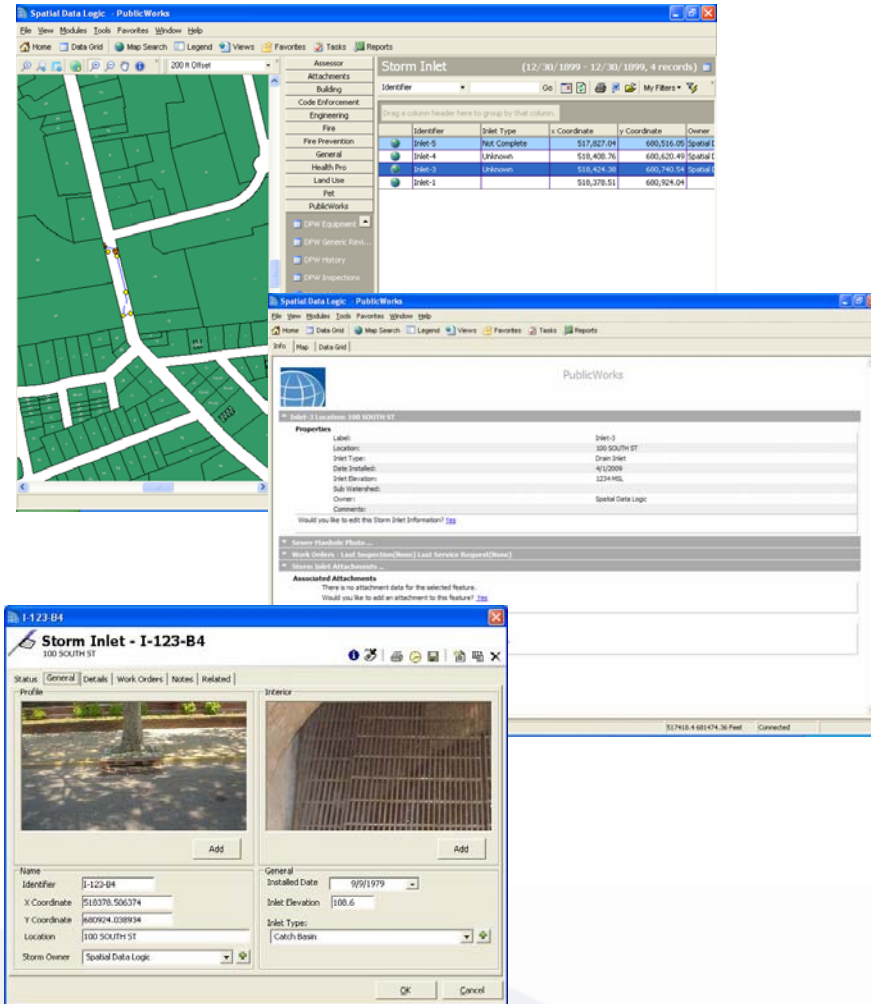


# Storm Water Management for the Public Works Module

## Software for Storm Water Management



- Asset Management using GIS for:
  - Storm Water Control Area
  - Conveyance
  - Inlets
  - Outfalls
  - Private Systems
- Asset Management includes
  - Categorizing Storm Control Areas
  - Conveyance Details
  - Inlet and Outfall Details
  - Asset Repairs, Pictures, etc.
  - Asset Condition
- Work Order Management
- Crew / Labor / Materials Management
- Inspections Management
- Integrated Complaint Tracking

## One module within a complete Municipal Management Suite

Municipalities can now maintain Work Orders, Inspections and Assets for your Storm Water systems, including:

- Illicit Connections for Outfalls
- Outfall Scouring Inspections
- Inlet Cleaning
- Debris Removal Tracking
- Equipment Tracking for Cleaning and Repair.

SDL believes that New Jersey municipalities are actually service organizations that operate as a network of departments that have a greater purpose. That purpose is to serve and protect the citizens of their community. To effectively operate within a network, you must be able to communicate with the other members, interact with them, see what they are doing and share data with them. Now you can, with the Professional Series of Workflow Automation tools from Spatial Data Logic.

### GeoLogic Municipal Roadmap

For a complete GeoLogic Municipal Roadmap:  
[www.SpatialDataLogic.com/sdl/Roadmap](http://www.SpatialDataLogic.com/sdl/Roadmap)

Visit us on the web at:  
[www.SpatialDataLogic.com](http://www.SpatialDataLogic.com)



**SpatialDataLogic**

2 Executive Drive Suite 200  
Somerset, NJ 08873  
Phone: 800-805-9695



ESRI  
Technologies  
TRADEMARKS  
under license from ESRI.