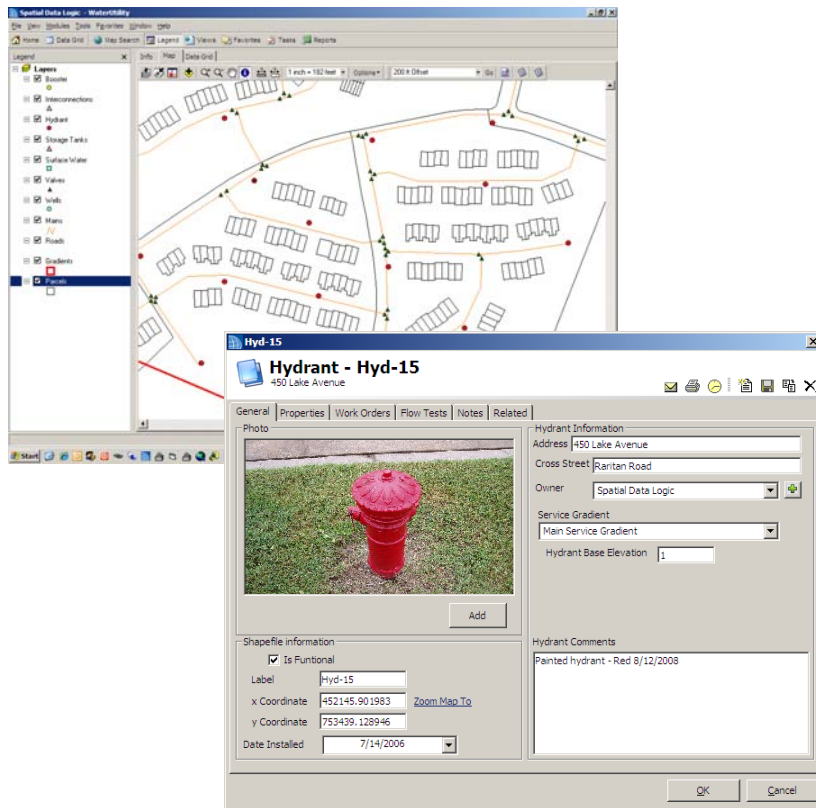


Water Utility Module



Software for Water Utility Management

- Asset import of Water Valves, Hydrants, Storage Tanks, Wells, etc. (via GIS Assets)
- Asset Management such as Flow Tests, Asset Repairs, ID Numbers, Valve Exercising, Pictures, Serial Numbers, etc.
- Work Orders Management
- Crew / Labor Management
- Inspections Management
- Integrated Complaint Management
- Easy to use GIS that automatically links data across departments

One module within a complete Municipal Management Suite

The Water Utility Management Department is responsible for a wide range of asset management and asset maintenance throughout the municipality. The Department's Staff provides for the delivery of high quality, cost effective, efficient, safe services involving public infrastructures and facilities to enhance the quality of life in the municipality.

SDL believes that Water Utility Departments are actually service organizations that operate within a network of departments that have a greater purpose. That purpose is to serve and protect the citizens of their community. To effectively operate within a network, you must be able to communicate with the other members, interact with them, see what they are doing and share data with them. Now you can, with the Professional Series of Workflow Automation tools from Spatial Data Logic.

GeoLogic Municipal Roadmap

For a complete GeoLogic Municipal Roadmap:
www.SpatialDataLogic.com/sdl/Roadmap

Visit us on the web at:
www.SpatialDataLogic.com



ESRI
Technologies
Authorized
Reseller
Trademarks provided
under license from ESRI.



SpatialDataLogic

2 Executive Drive Suite 200
Somerset, NJ 08873
Phone: 800-805-9695